

THE WIRELESS INTELLIGENCE PLATFORM

Even the smallest wireless issue can become a huge headache for your most critical processes if you lack visibility into the problem and do not tackle it quickly.

But what if your system recognized and notified your IT department of network abnormalities before they turned into problems - and recommended solutions automatically?

That's what The Wireless Intelligence Platform™ (WIP) is all about: advanced wireless optimization algorithms work alongside next-generation predictive analytics to keep your WiFi network up and running reliably and efficiently. Our unique combination of on-premise sensor hardware and cloud-based, patented software is vendor agnostic, and seamlessly integrates with any current network infrastructure. We eliminate small problems before they become big problems.

AUTONOMIC WIFI ASSURANCE

- Complete network visibility 24x7/365 - providing insight into entire WiFi network including remote clinics
- Signatures added monthly as Wyebot learns about new WiFi standards, clients and APs in the WiFi ecosystem
- Automatic analysis of current or potential problems + actionable intelligence for resolution keeps networks running seamlessly

WIP'S FEATURES PROMISE AN IMPROVED WIFI PERFORMANCE:

- Save up to 90% in mean-time to resolution
- Reduce WiFi problem tickets by more than 50%
- Reduce remote site visits by up to 80%

CLIENT DEVICE FORENSICS

- 24x7 complete visibility shows every connected device and complete wireless network infrastructure
- Historical data and analysis provides cost-effective capacity planning and eliminates problem identification-and-resolution finger pointing

VENDOR AGNOSTIC

- Because WIP is Vendor Agnostic and gives an unbiased view, all features benefit from WIP's easy to use seamless integration with the existing network infrastructure. The result is future-proofing against the ever changing wireless technology and explosion of IoT devices.



THE WIRELESS INTELLIGENCE PLATFORM

AUTOMATED DETECTION, NOTIFICATION & MITIGATION

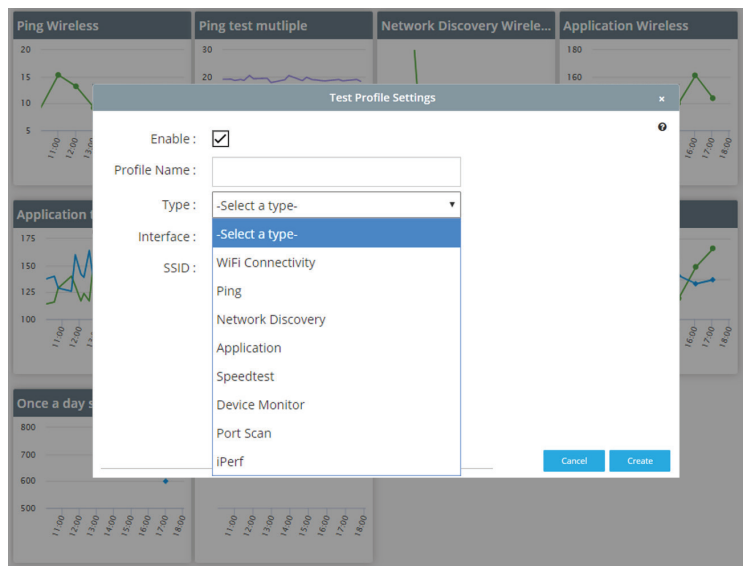
WIP automatically collects and processes all network activity, analyzing the data to detect network anomalies using an Artificial Intelligence-based engine. Clear and concise problem statements are presented, along with actionable intelligence to correct existing issues immediately eliminating finger-pointing or proactively prevent future issues.

SECURITY BREACH DETECTION

WIP's 24/7/365 monitoring detects and notifies staff of events such as newly detected APs, security mismatches between networks, potential DoS attacks, etc. and provides a solution to help pinpoint the source.

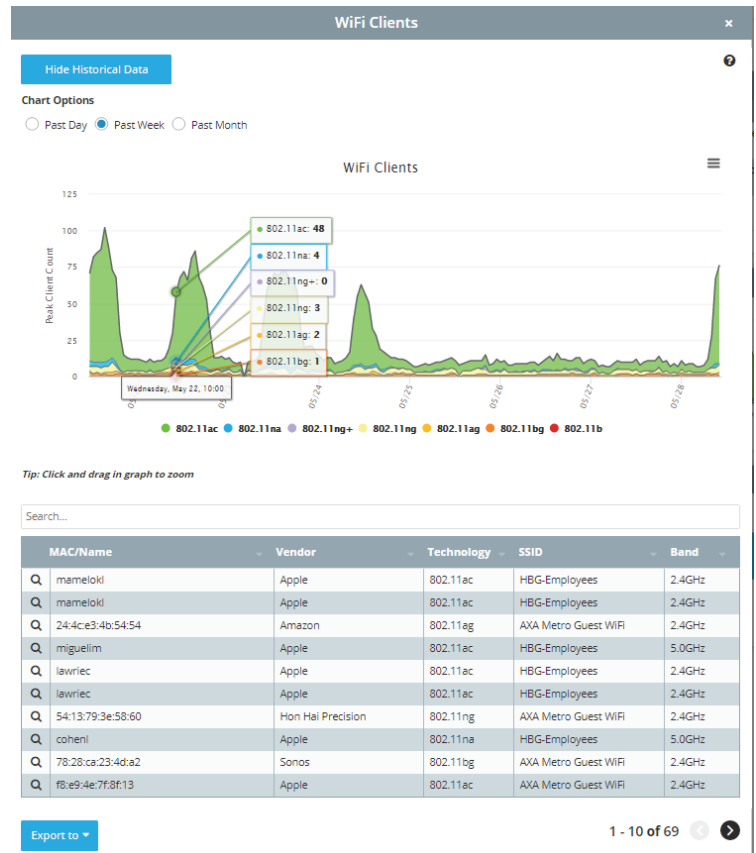
REMOTE NETWORK TEST SUITE

The Network Test Suite ensures rapid response times even with limited staff and remote IT teams by running remote tests on a scheduled or periodic basis over Wired and Wireless Networks. WIP sends automatic alerts if any test fails so that resolutions can be found immediately. WIP proactively performs a Wireless Connectivity and Internet Connectivity/Ping Tests; Application Tests; Speed Tests; Device Monitor Tests; Device Discovery Tests; Security Audit Test; and Throughput Testing.



HISTORICAL NETWORK AND CLIENT FORENSICS

Go back in time with the user interface and discover how specific devices operated at a point in the past. Study network events in depth, even if the exact conditions in question no longer exist.



EXPORT DATA, REPORTING & LOGGING

Export real-time and historical wireless network data from a number of tables and graphs. Share data with associates to support business analytics, monthly updates and quarterly reviews.

COMPLETE WIRELESS ECOSYSTEM VISIBILITY

Instant, visual updates of the entire network, including data from non-WiFi sources, provided with long-term pattern recognition, fingerprinting and behavioral profiling. WiFi and client issues are displayed on WIP's dashboard, color-coded based on severity. Issue details and solutions are provided on the sensor status page.